



E: [info@cmsqatar.net](mailto:info@cmsqatar.net) | [www.cmsqatar.net](http://www.cmsqatar.net)



## **MESSAGE FROM GENERAL MANAGER**

We take on the challenge of replicating our success to prove that what we have achieved was not a stroke of luck, but the outcome of well executed strategic initiatives by a team of committed professionals.

Being a customer centric firm, we focus in creating new value to achieve sustainable profit growth and catering social & environmental issues.

**General Manager**



# ABOUT US

## VISION

To be a leader in supplying and delivering value-added quality products and services for the construction industry.

## MISSION

To achieve customer recognition by delivering the highest level of performance with integrity, creativity and passion for results .

## VALUES

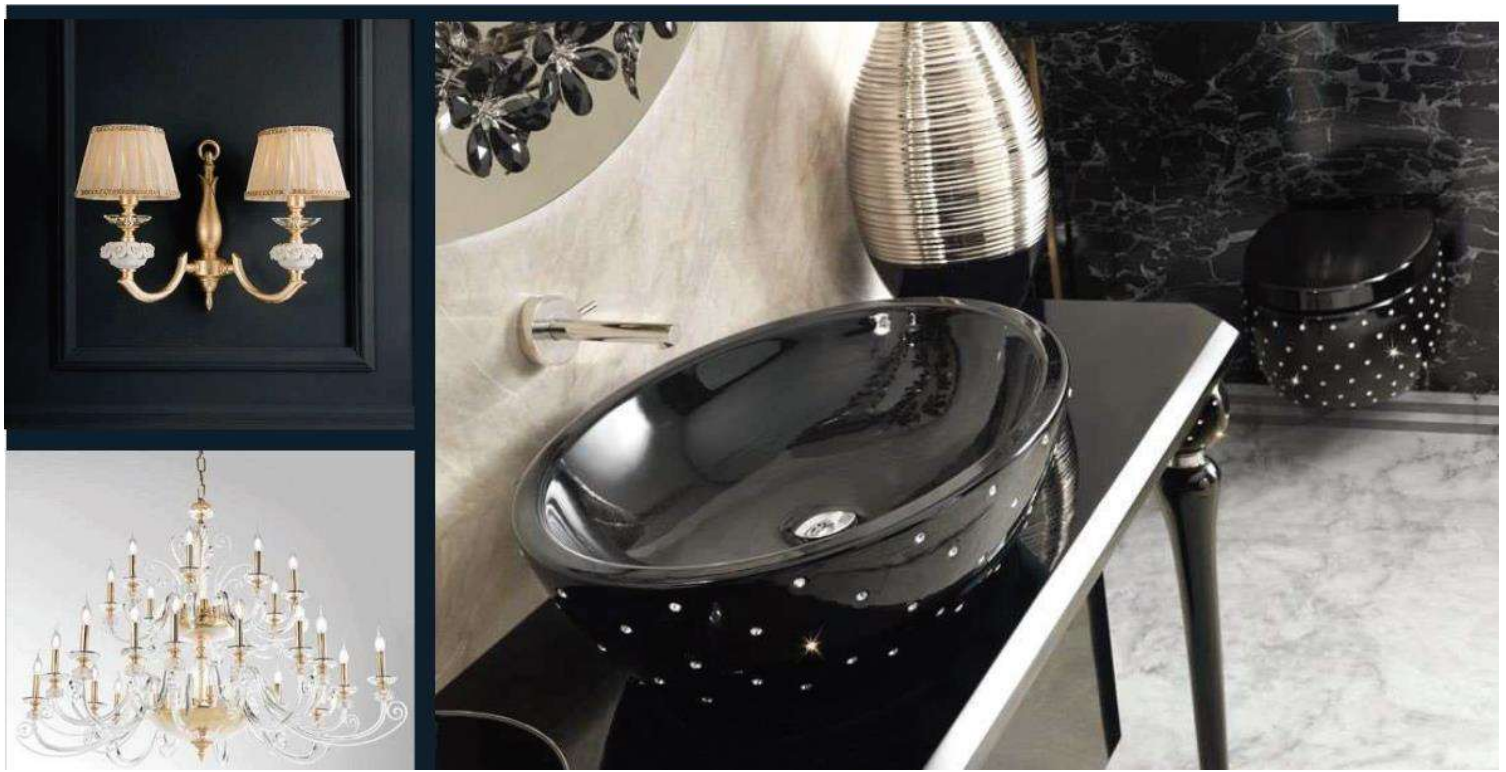
**C** : Committed with Confidence

**M** : Masters in Motivations

**S** : Successfull with Stability

## CONSTRUCTION MATERIAL SERVICES & TRADING COMPANY (CMS)

Is one of the leading MEP material suppliers in the state of Qatar, since its establishments CMS focused to provide the Qatari market with up to date MEP construction materials and products in order to support the major clients, consultants, real estate developers and MEP contractors





## **IN ORDER TO DO SO CONSTRUCTION MATERIAL SERVICES & TRADING COMPANY**

lined up with major MEP manufacturers all over the world to provide top notch products, our continual coordination with clients, consultants, real-estate developers and MEP contractors enabled us to know the market trend and requirements, accordingly we are committed to meet their expectations and demands.





## CMS

conducts marketing and technical studies to enable our partners and potential partners evaluate the market opportunity.

## AS THE STATE OF QATAR IS FOCUSING ON THE GO GREEN CONCEPT

(CMS) took a decision to be part of this concept, therefore we acquired the Qatar Green Building Council membership (QGBC).

## OUR COMMITMENT

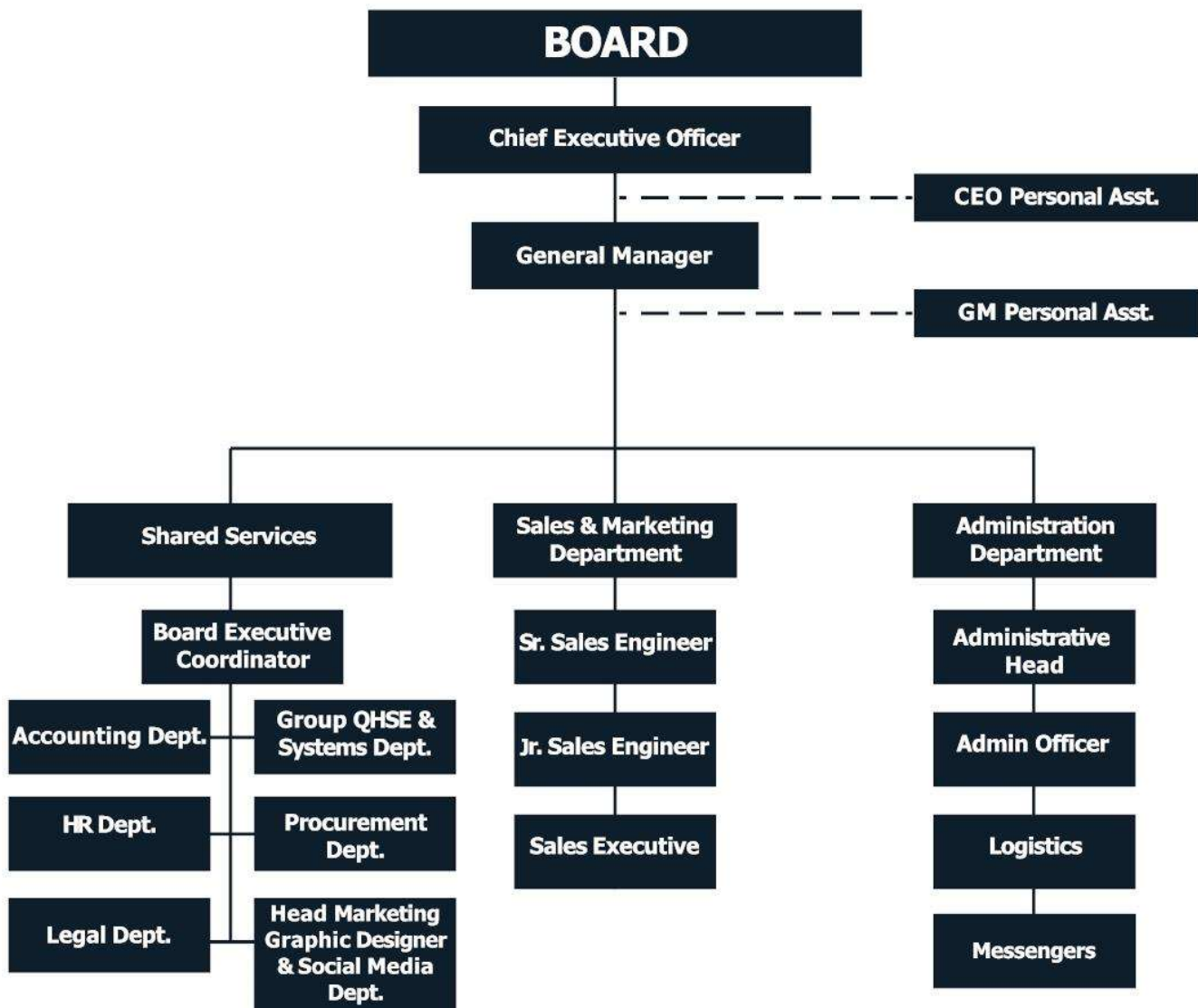
Our commitment towards values and customer satisfaction drives us for better Quality services, Construction Material Services & Trading Company (CMS) ensure its customers to go all the way to meet their expectations.







## ORGANIZATIONAL CHART





# CLIENTS





# MAJOR PROJECTS











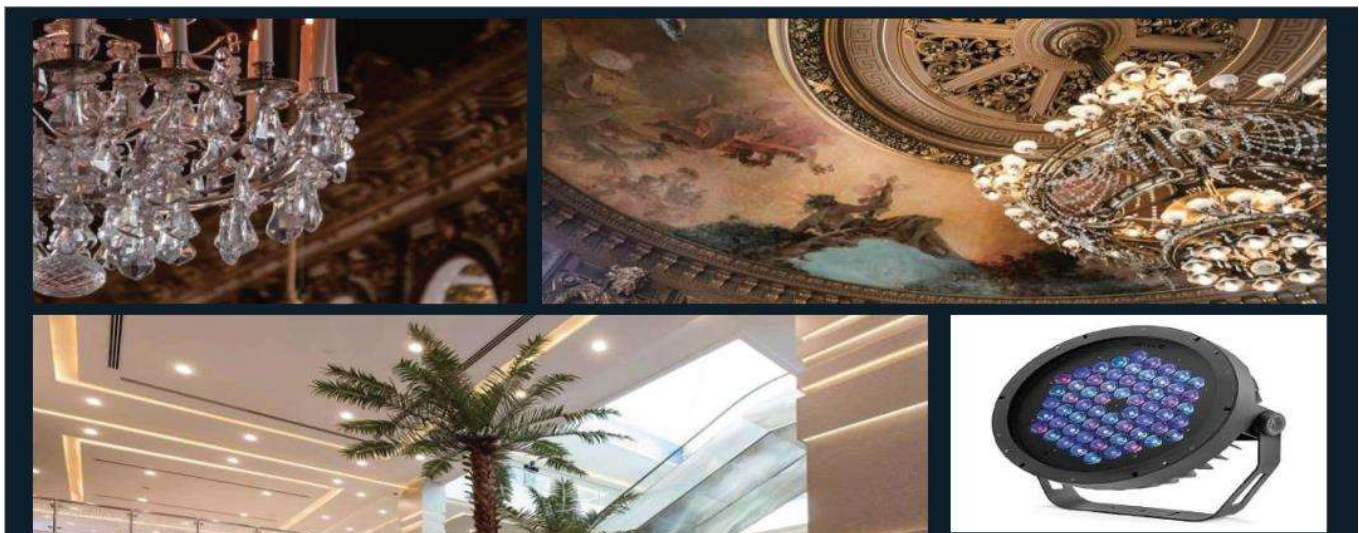


# PRODUCTS

(CMS) a leading supplier for electrical and mechanical products. CMS sources the best products from manufactures all over the world as follows:

## Electrical Products:

Brand Name	Product	Origin
Disano / Fosnova	LED Lights & Fittings	
Rasmi	LED Lights & Fittings	
Griven	LED Lights & Fittings	
SAH	Pole Lights	
Rasmi	Wiring Accessories	
Avvio	LED Lights & Fittings	
Right Lights	LED Lights & Fittings	
Qlite	LED Lights & Fittings	
Teknolite	LED Lights & Fittings	
MDL Technology	LED Lights & Fittings	
Laica Electronics	Wiring Accessories	






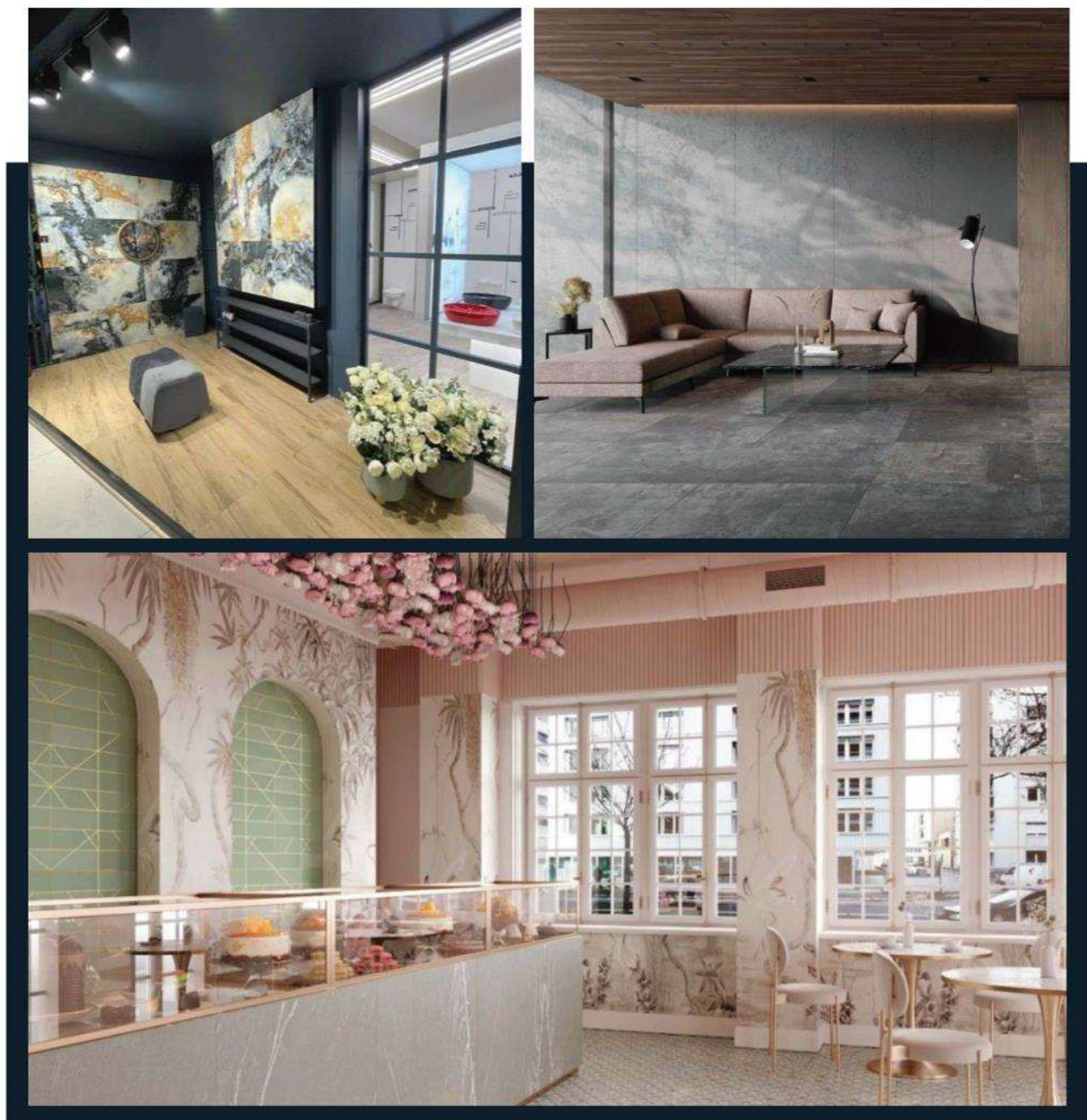
## Mechanical & Plumping Products:

Brand Name	Product	Origin
GIACOMNI	PPR, PEX, PIPE Ball Valves & Manifolds	
Seramiksan Co.	Sanitary Wares & Wash Basin	
B & M Group	Sanitary Wares & Mixers	
Remer Co.	Mixers, Shower Programme, Fittings, Bathroom Accessories	
TPH (Top Project Hotel)	Bathroom Accessories, Mixers and Fittings	
Aet	Luxury Sanitary ware	
Creative Co.	Sanitary ware items	



## Ceramics & Porcelain

Brand Name	Product	Origin
Yong Chang	Ceramics and Porcelains, wall Panels	
Seramiksan Co.	Ceramic, Porcelain Tiles	
Aparici	Ceramic, Porcelain Tiles	
Imola	Ceramic, Porcelain Tiles	





# SUPPLIERS



TECHNOLOGIES LUXILUM

**raSmi**  
LED-UK

**TPH**  
TOP PROJECTHOTEL

**SAH**

**GIACOMINI**  
WATER I-MOTION

  
**seramiksan**

**disano**  **Fosnova**  
illuminazione

 **IMOLA**  
CERAMICA

  
**Remer**  
MADE IN ITALY  
1965

—CHELSOM—

**MSI** Metro Smart International  
Official partner of Hydro Group Products

 **LUMASCAPE**

  
**MOSDORFER CCL**  
KNILL GRUPPE

**disano**   
illuminazione

**RIGHTlight**  
LET'S BRIGHTEN LIFE

**GRIVEN** 

**WILA**

**QVVI**   
LED lighting

  
**Qlite**  
Integrated Solutions

**TEKNOLITE**®

# PROJECTS



## LUSAIL PLAZA TOWERS

PLOT 1 & 2

THE CONTRACTOR: **MIDMAC CONTRACTING COMPANY**

PLOT 3 & 4

THE CONTRACTOR: **HYUNDAI ENGINEERING & CONSTRUCTION**





# LIGHTING PRODUCTS







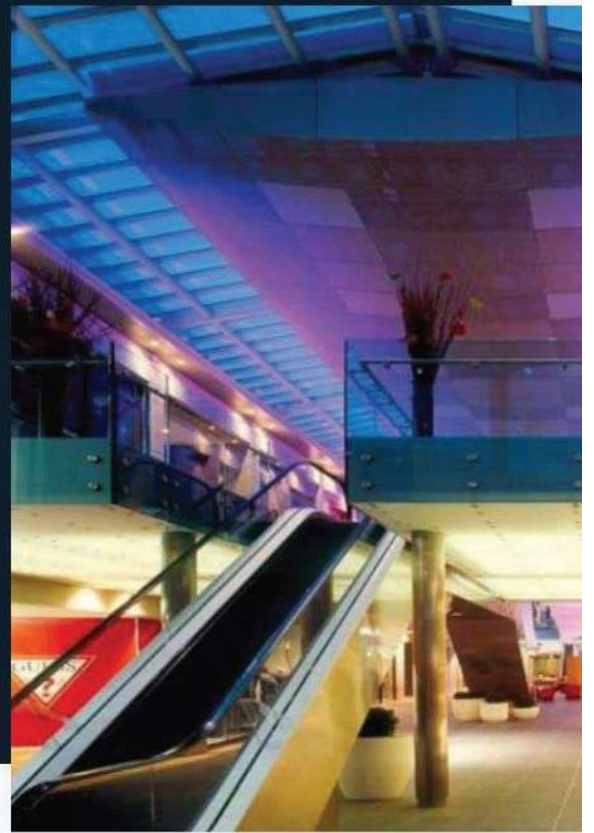
## PRODUCTS

Rasmi Global Electronics L.L.C aims to produce high quality, state-of-the art LED lighting products and provide comprehensive solutions to our existing and new customers. We aim to be at the fore front of the fast moving technological changes in LED lighting.

WE started as a UK manufacturing company founded in 1978, specialising in design and manufacture of EMC and lighting systems, employing a team comprising designers, R&D, production staff, sales and customer service, and qualified electricians, designing and manufacturing transformers, emergency lighting and low voltage lighting systems. We have since evolved to keep pace with the ever changing technology available. Our designs presently focus on high efficiency LED light source technology for home, commercial and outdoor applications. From initial designs created by our design team in our purpose-built facilities, to installations completed by our electricians, we can provide a fully integrated and tailored LED luminaire solution for businesses and the public sector in the UAE and in the world.













**Led Downlights**



**LED High Bay**



**LED Deck Light Style D**



**LED Wall Mounted Single Sided Light Style B**



**LED Linear Tunnel Light Without Front Glass**



### **LEDSPOTLIGHTS**



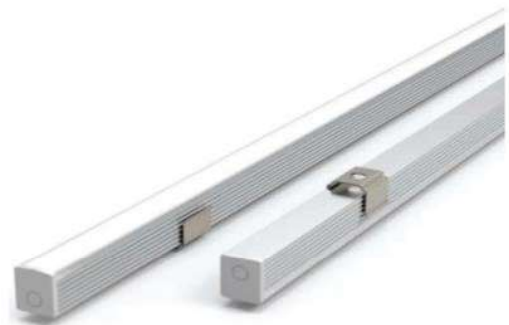
### **LED Polished Aluminium Shade Highbay Light**



### **LED Modular Rectangular Floodlight**



### **LED Aluminium Strip Light, Mini-F**



### **SMD GU5.3/G53 Recessed Display Lights**





## **LEDPOLYCARBONATE WALL BULKHEAD LIGHTS**



## **LEDROUND SQUARE DIA CAST & PC BULKHEAD LIGHTS**



## **LED DIE CAST BULKHEAD LIGHTS**



## **LEDCHANDELIERS**



## **LEDLINEAR NCF**



## **LEDPLANELS**



## WIRING ACCESSORIES

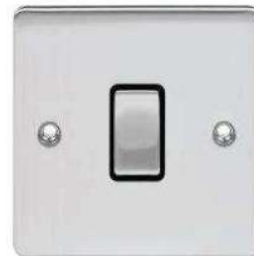
**10A Switches BC**



**13A Sockets BC**



**20A DP Switches BC**



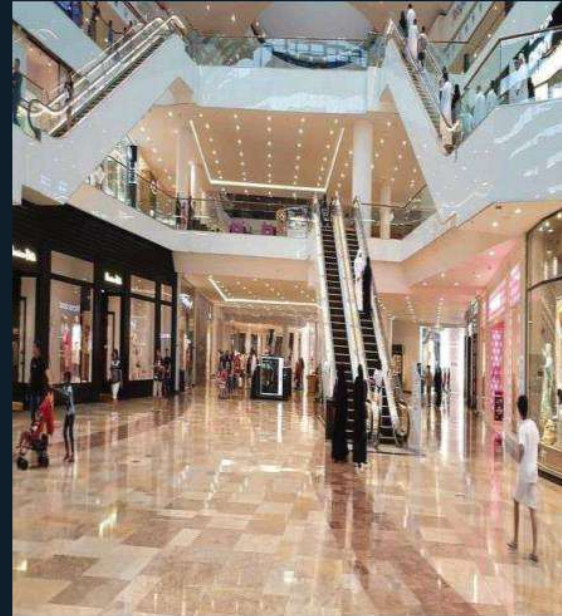
**45 Amb Cooker Control Units**



**Co-Axial & Satellite Sockets**









**:Fabbian**

## **PRODUCTS**







## PRODUCTS

**Capital 600**  
High-performance exterior  
surface mount wash lighting



**Full Moon\_Wall**  
Exterior wall, ceiling or floor  
mounting decorative lighting



**Graph-i-Cell**  
Exterior pixel mapping module



**Maxi Waterled**  
High-performance  
underwater wash lighting



## PRODUCTS

**Disano Clima**



**Disano Stelvio**



**Disano 841 Mini-Comfort**



**Disano Faro 2 Bollard**





# MECHANICAL & SANITARY PRODUCTS





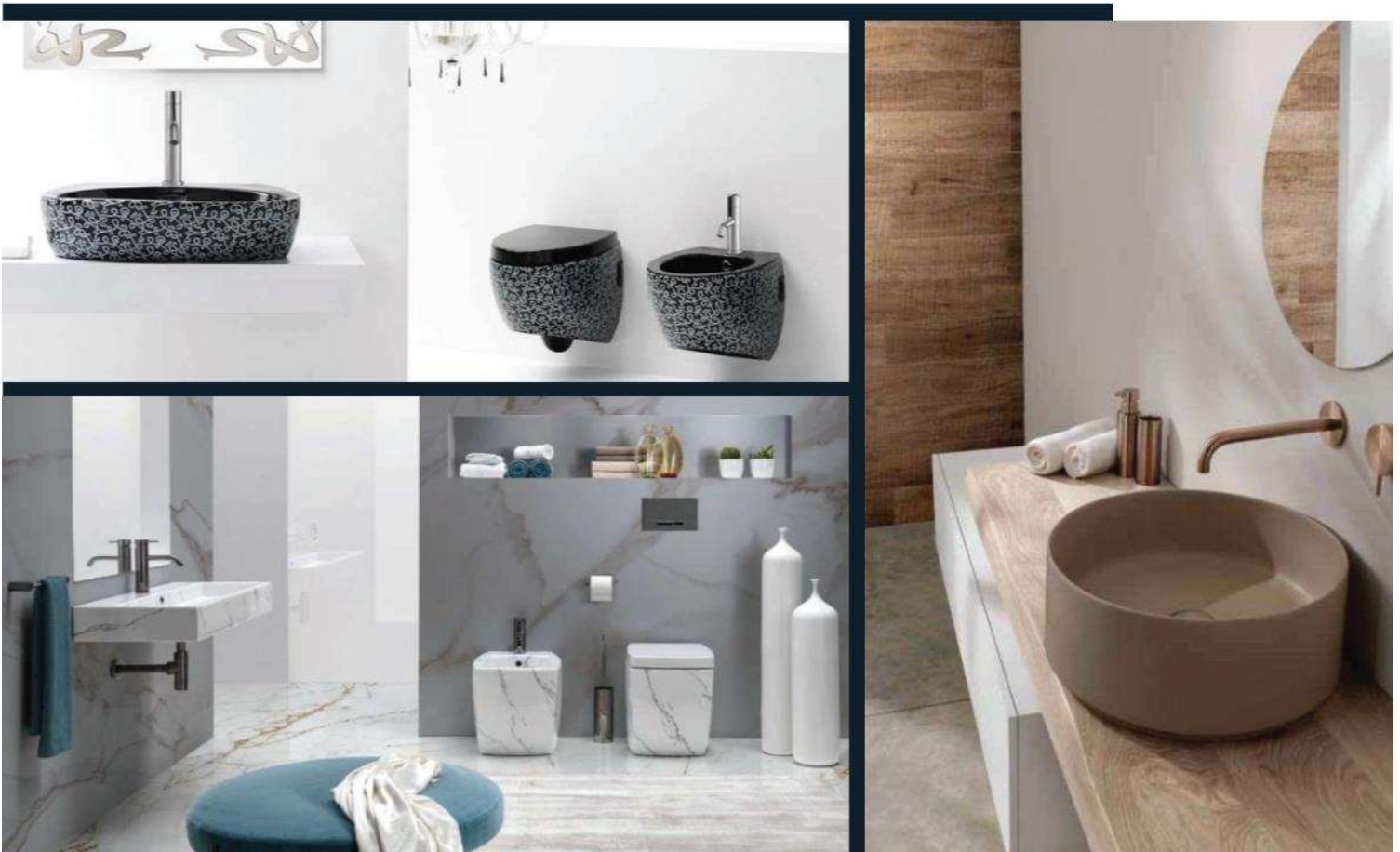


## PRODUCTS

The brand "Aet" is synonym of quality, design and innovation. In few years the company has been able to get its own Know-how in the ceramic sector and became a reality present reality in most part of the world. Continuous renovation and development process lead to get positive consents from the market and reinforce a guide line that always defines the business core of the company:

high quality, new lines and maximum flexibility to differentiate with a product of high-end that cannot be standardised.

A young company, dynamic and original, that in few years stood as worldwide leader of the sanitary product, coloured and decor. With a range of over 50 different solutions of personalisation of the product, AeT Italia continues to express the main elements that let the small familiar company to become a reference point both for design of washbasins and sanitary in ceramic, both for the innovative products and solutions.











## PRODUCTS

Remer Rubinetterie S.p.A. is a leader company founded in 1965 in Milan. Operating on the national and international market for 45 years, Remer is constantly in evolution.

The goals achieved by the complete internalization of the production cycles, rank Remer among the best sector producers of the world.

Our fleet of highly innovative and fully automated and robotic machines means high quality level.



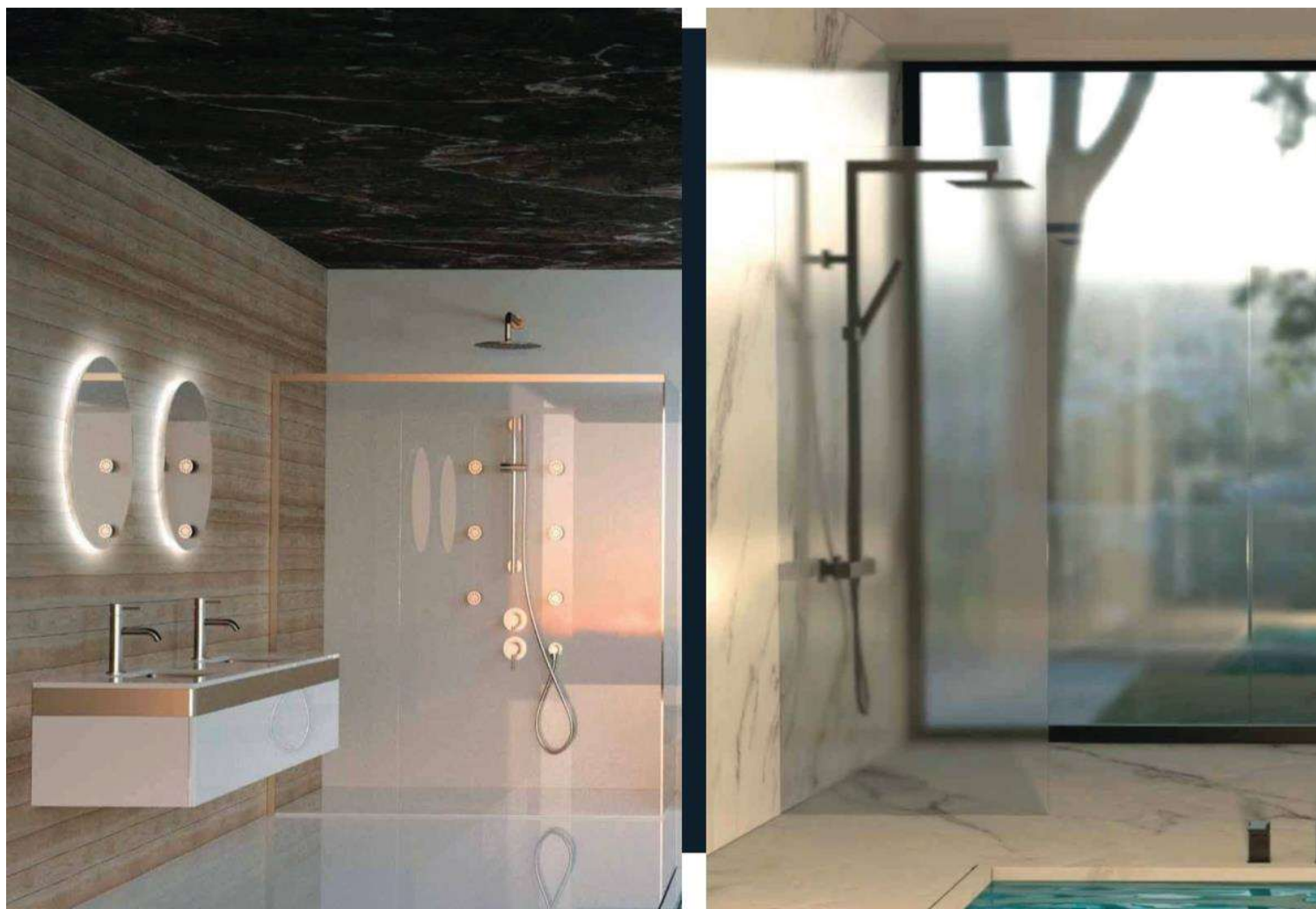


In this section we are pleased to show you our manufacturing plants for macro-departments and show you through photo-caption sessions the productive power of Group Remer.

Starting from 3D design, analyzing shapes and performances initially via prototyping in ABS, then in brass, then carefully selecting the best raw materials, producing using the most sophisticated and technologically advanced machinery, supported by robots for a total automation, and ending the product with our internal polishing and chrome-plating machines, the whole production cycle is carried on in the plants of the Remer Group companies.

Leak tests (carried out with air on 100° of the production and with water by sample) and painstaking assembly give to each product the guarantee of total quality.

Our company philosophy of continuous improvement and a selection of highly qualified working personnel, motivated and proud to do things in the best way, are attributes that are reflected in our products, which become the fruit of love of people for the company and for their work, in the interest of the community.





## PRODUCTS

Top Project Hotel is situated in Oleggio near Malpensa airport. Our working space is the bathroom furniture.

Top Project Hotel offers a wide catalog which contains numerous types of products and services, such as our proposal for the bathroom furnishing in hospitality area(hotel industry, bed and breakfast), direct sale of wide range of taps and accessories for bathroom, shower and many other.

Particularity of Top Project Hotel is to deliver high quality products and services at competitive prices. All this thanking to our network of suppliers and synergy with the most known trademarks and business activities of Northern Italy.







**WATER TAPS & FITTING**  
**SHOWER ENVIRONMENT**  
**BATHROOM ACCESSORIES**  
**BATHROOM COMPLEMENTS**  
**SPARE PARTS AND COMPONENTS**



# PRODUCTS



## SANITARY WARE

Top Project Hotel is situated in Oleggio near Malpensa airport. Our working space is the bathroom furniture.

Top Project Hotel offers a wide catalog which contains numerous types of products and services, such as our proposal for the bathroom furnishing in hospitality area(hotel industry, bed and breakfast), direct sale of wide range of taps and accessories for bathroom, shower and many other.

Particularity of Top Project Hotel is to deliver high quality products and services at competitive prices. All this thanking to our network of suppliers and synergy with the most known trademarks and business activities of Northern Italy.









# PROJECTS & CONTRACTORS





# PROJECTS

## CONTRACTORS PROJECT NAME

### **Al Habtoor Engineering**

Shangri-la Tower

Rotana Tower

Merwab Tower

Al Faisal Tower

### **Al Jaber Electro Mechanical**

Dukhan Housing Project

Mesaieed Community School

Al Khor Housing Project

JUMA MASJID & SPORTS FACILITIES AT DUKHAN

Dukhan Project Phase IX

EW SCHOOLS PACKAGE 3-STAGE 7B- Supply & Delivery

Dukhan Project Phase IX

JUMA MASJID & SPORTS FACILITIES AT DUKHAN

The Learning Center

New Airport (N.I.D.A.)

### **Megatec Electro-Mechanical**

Porto Arabia Parcel 15A 15 B

Porto Arabia Parcel 15B

Porto Arabia Parcel 3A 3B

# PROJECTS

## CONTRACTORS PROJECT NAME

### **Bianco Trading & Contracting**

Qatar Armed Forces Headquarters Building for Transport Unit  
Sailiyah Camp

Qatar Armed Forces Proposed Procurement Direcorate Building  
Sailiyah Camp

Qatar Armed Forces Joint Command College At AI Wakra

24 Villas at Muiather & Muraikh

Kings College School

### **QEMG-AI-Mana**

SILHOUTTE Tower

Business Park & Hotel Faciltities

Barzan Camp Project

Fire Station at Pearl Qatar

### **TERNA Qatar**

ALMIRQAB MALL



# PROJECTS

## CONTRACTORS PROJECT NAME

### **TAKYEEF Electromechanical**

Library-Qatar University  
New Research Complex-Qatar University  
Tivoli Showroom  
SHK/Hanadi Villas  
Six Squash Court  
AI Banush Club  
Beach House  
Renovation of BOUTIQUE Hotel Block C-SOUQ WAQIF  
Admin Office, Trucks & Parking Supreme Council  
of Justice  
Riza Villa

### **CONPEL QATAR**

New M & F Student House

### **Bin Thani Electro Mechanical**

3 School Project

### **How United Services**

DefectsGTS 53

# PROJECTS

## CONTRACTORS PROJECT NAME

<b>Hamton International</b>
Blatchford Preston Complex II- Airbase Project
<b>Debbas Enterprise Qatar</b>
Hudaifi Project
<b>Bridge Electromechanical Contracting</b>
Qatar Sport Club Renovation
<b>ARCON</b>
ABM Military College
2 Braracks
<b>Al Tamez Middle East W.L.L</b>
MOI Security Complex - AI Wakra
Abdul Rahman Palace Villa
<b>Power Action Gulf</b>
Labour Camp Project
Add out Majeles



# PROJECTS

## CONTRACTORS PROJECT NAME

### **Bloom Contracting Co. WL**

AI Matar Showroom B+G+M+2

### **Construction Development Contracting & Trad**

B+G+7 Apartment Building @ Umm Gwailina for AWQAF

### **Trinity Engineering Services**

2B+G+IP+20 Marina Tower At Lusail City

### **Watts & Water Engineering WL**

WW 10 Ziad Villa

WW09 Sulaithi Villa

WW-14 Villas in Duhail

2B+G+2B Office Building

### **The Best Trading & Contracting Co.**

Site 72 New Salata Project

Biobank Project

The Pearl LPC 49&50

# PROJECTS

## CONTRACTORS PROJECT NAME

### **QBEC**

Warehouse and logistics centre @umm shahrain Barwa

### **Tadmur Contracting WLL**

Construction of 130 Villa (Les Roses #3

### **Zahla Trading & Maintenance**

Qatar Prefab Factory

24 villa project

### **Qatar Engineering Construction Co WLL**

QCON Headquarters at Ras Laffan

### **Qatar Building Engineering Co**

Barwa Warehouse & Logistics for Manateq at Uum Shahrain

### **Trans Gulf**

Qtel - CUSTOMER CARE BUILDING AT MESAIMEER

### **AI Futaim Engineering**

IKEA-Festival Area



# PROJECTS

## CONTRACTORS PROJECT NAME

**Sielv-Global Integrated Solutions**

SHK Mohammed Bin Faisal Palace

**Megatec Elctro-Mechanical**

Porto Arabia Pacel 3A 3B

**AMEM Engineering**

Doha North Sewage Treatment Work

**Structural Qatar**

AI Khour Housing Projects Zone 13 & 14

**TARGET Engineering Construction Com. LLC**

Accommodation in Halul Island

**Powermech Engineering**

Ministry of Interior

**EFECO-Qatar**

World Trade Center

Twin Tower



# Msheireb Downtown Doha Heart of Doha phase 2



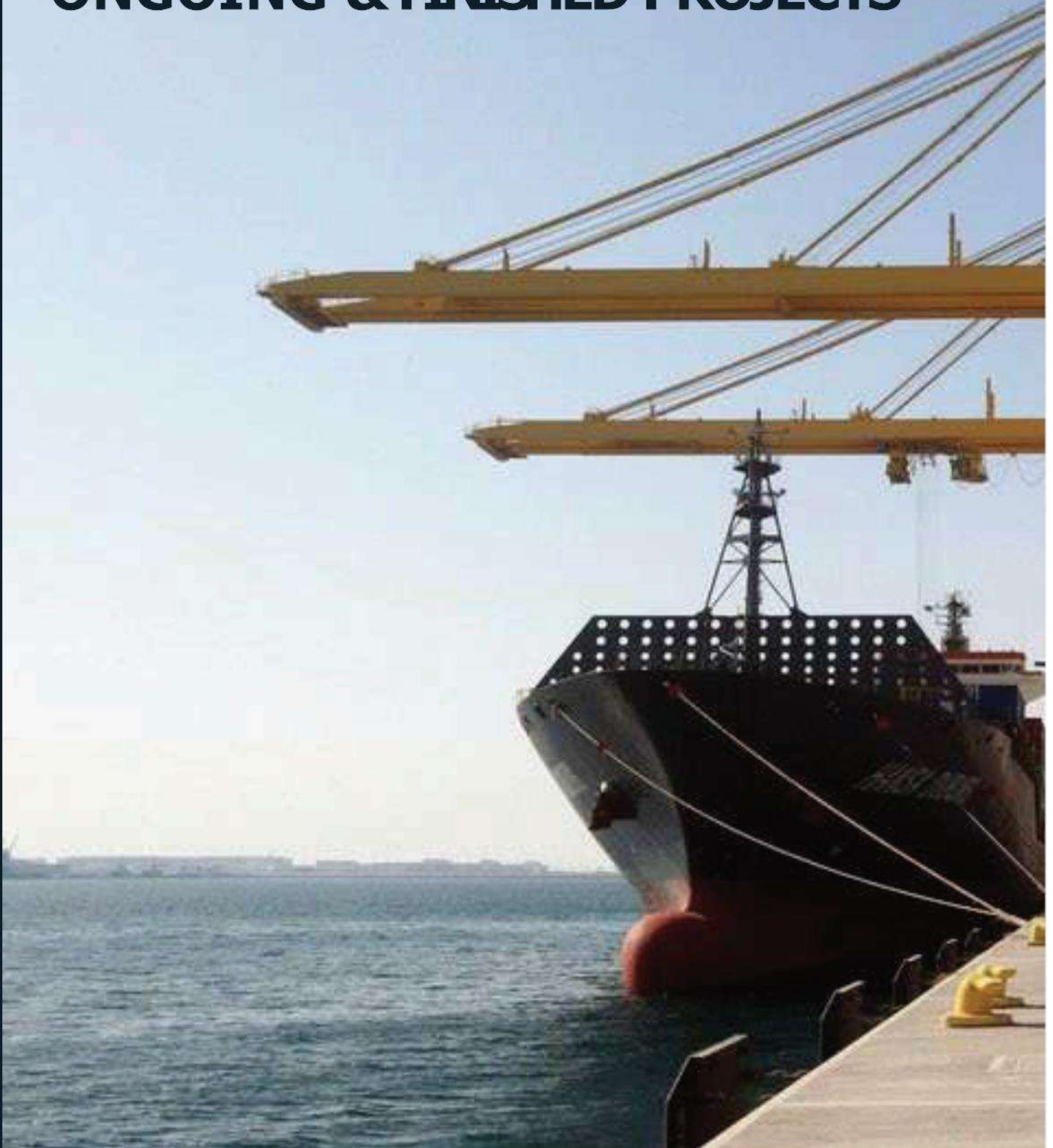


Manufacturer	Country of Origin
<b>Cooper Lighting &amp; Safety</b> Crompton / Menvier / J.S.B.	
<b>Cooper Industries</b> Ametric, Edison, Crouse-Hinds, Fail-Safe, Halo iO LED, Lumark, McGraw-Edison, Neo-Ray, Portfolio, Streetworks	
<b>Nordeon Group</b> WILA, Hess, Griven, Vulkan, Schmitz, Lamp	
<b>Disano / Fosnova</b>	
<b>Metrosmart International LLC</b>	
<b>Lumascape Lighting</b>	
<b>Chelsom</b>	



**Airports & Sea Port**

# **ONGOING & FINISHED PROJECTS**





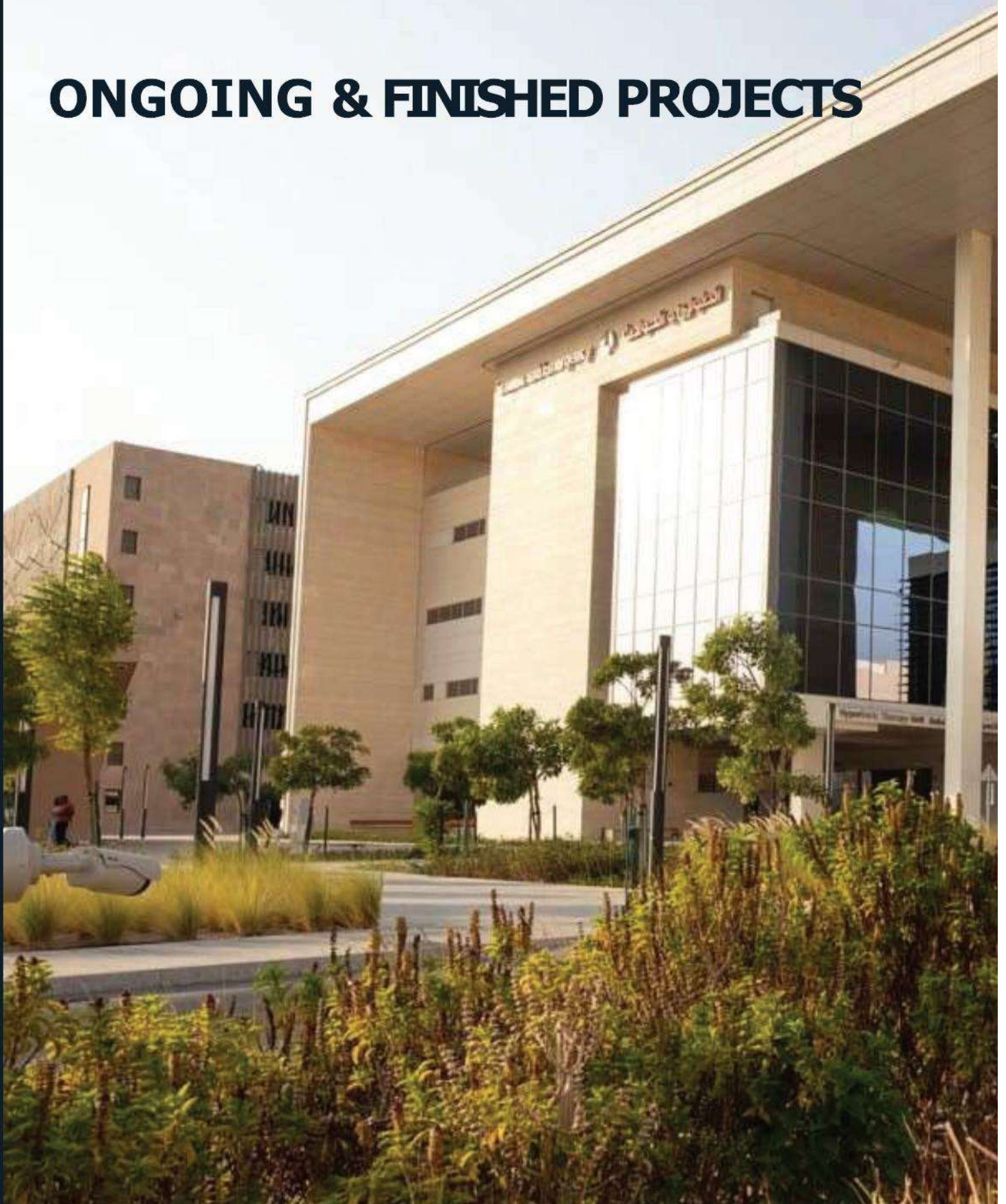


Project / Client		Contractor
Hamad International Airport CP	51	Six Construct - Midmac JV
Hamad International Airport CP	33	Hitachi Technologies
Hamad International Airport CP	110	RDK International
Hamad International Airport CP	75	Butec
Hamad International Airport CP	18	Anel Electrical Project & Construction
Nakilat Shipyard		Arabian A/C Contg.
Al-Udeid Project		MAPCO
Doha Air Base		H.B.K. Engineering
AL - Udeid Project		Contraco Engineering
Doha International Airport		C.D.C / K.D.S
Hamad International Airport CP	65	J.T.C



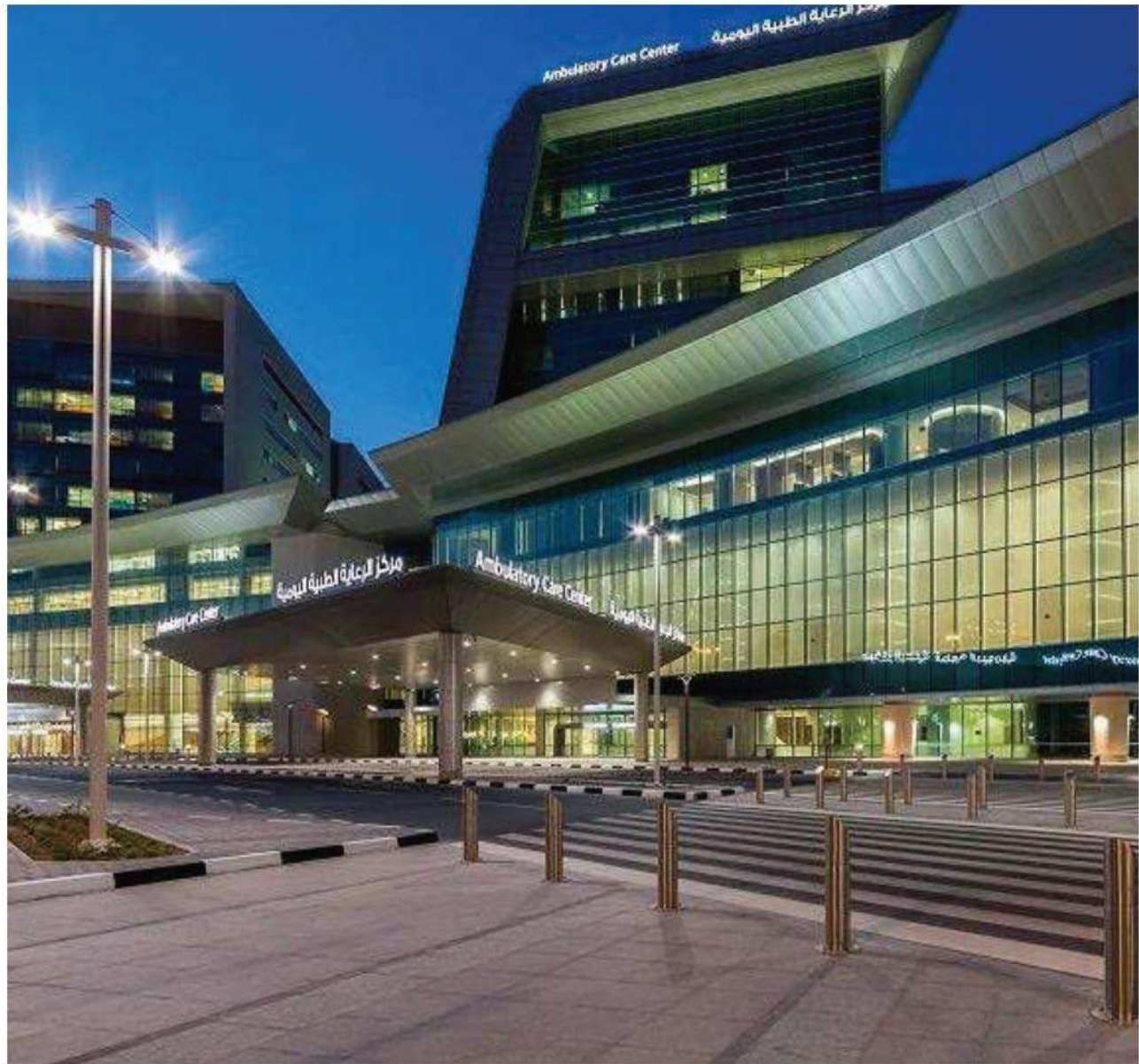
# Hospital & Health Care Centre

## ONGOING & FINISHED PROJECTS

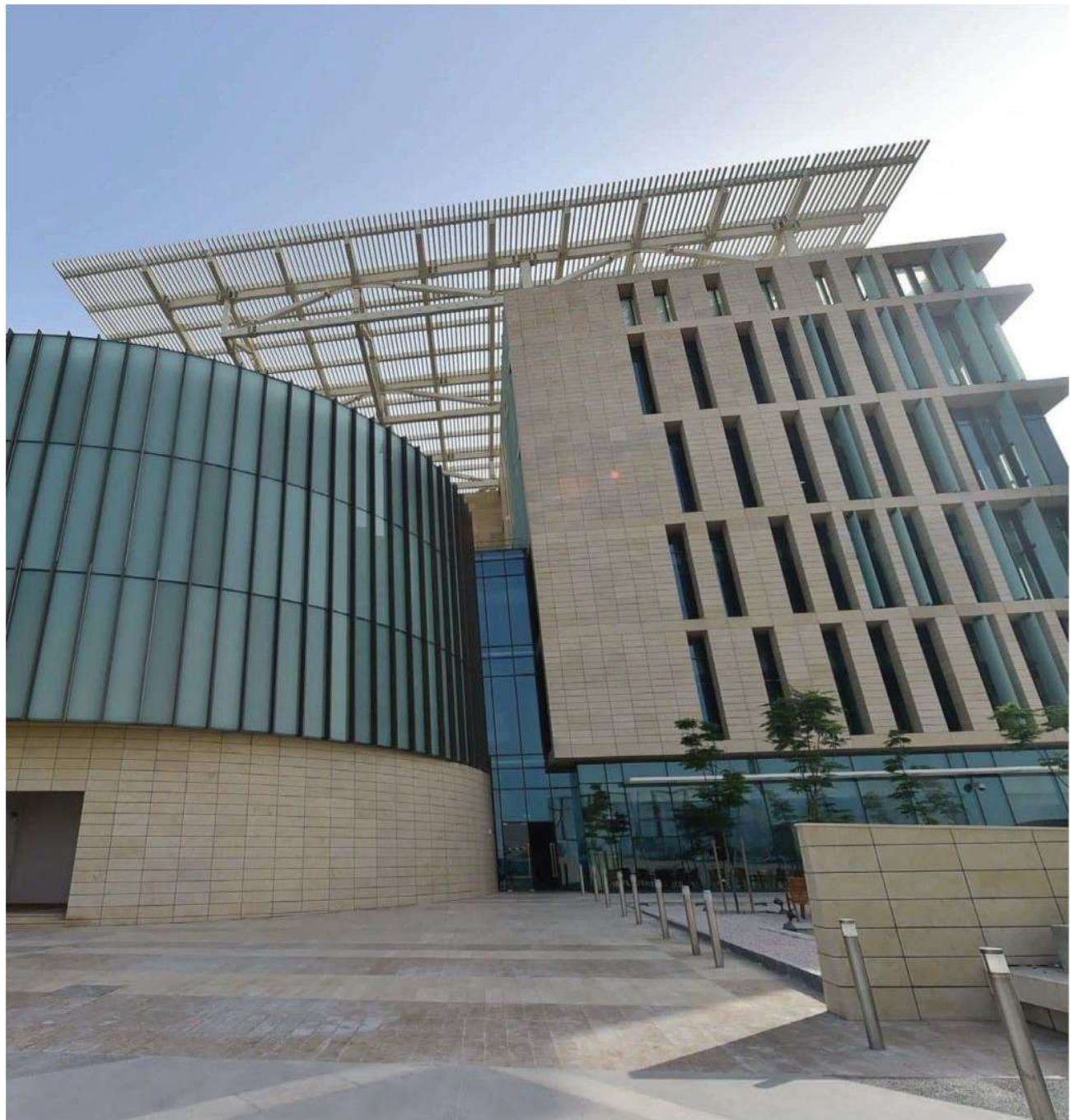




Project / Client	Contractor
Hamad Medical City Renovation	Lightcraft Trading
Hamad Medical City Fit-Out Project	Hyundai Engineering & Construction
Hamad Medical City Renovation	New Centre Trading & Engineering Services
Hamad Medical City Renovation	Depa Qatar
Medical Tower	H.B.K. Engineering
H.M.C Ministry of Public Health	H.B.K



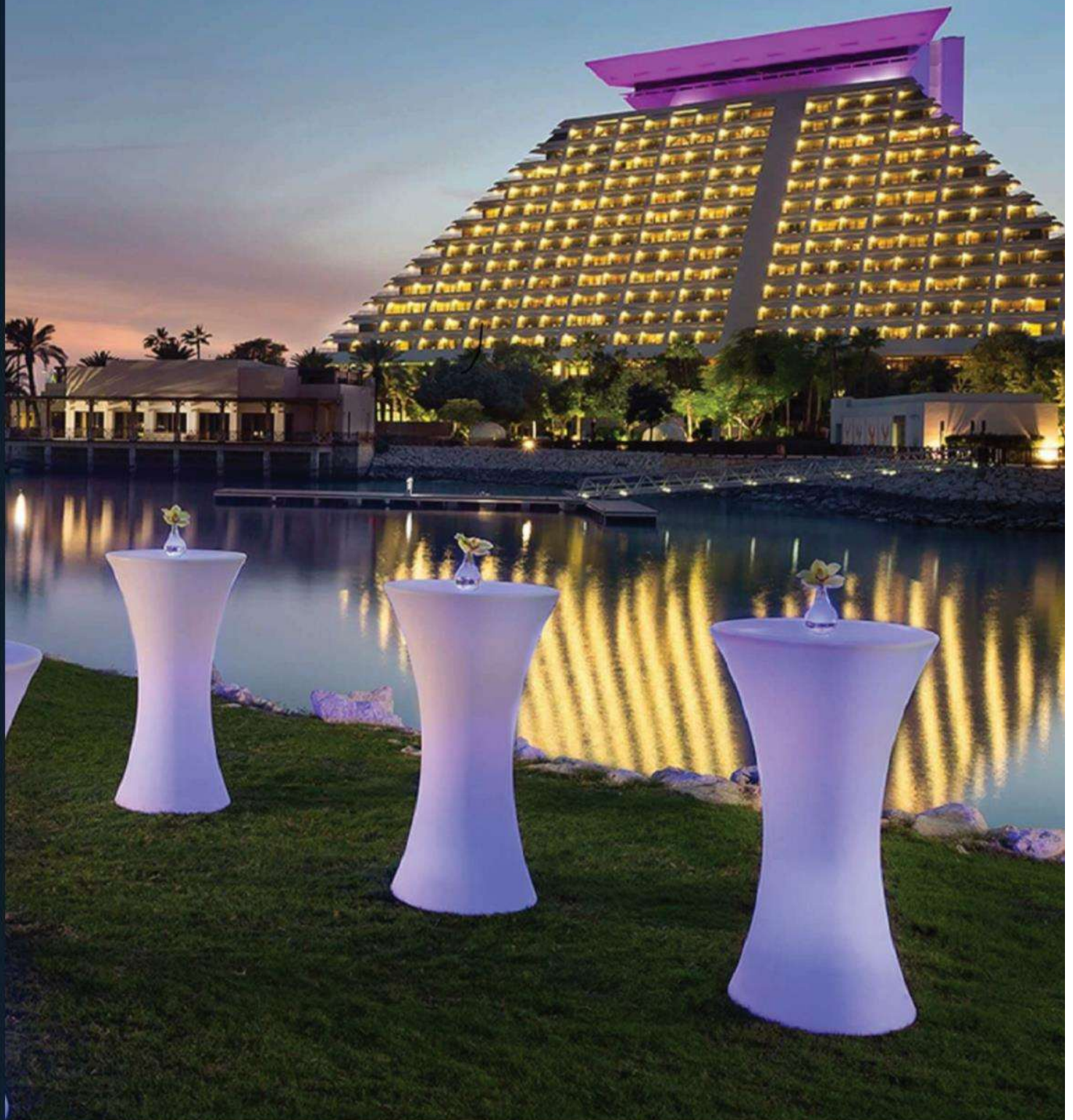
Project / Client		Contractor
H.M.C. Residential Complex		Contraco
Doha Clinic Renovation		A.K.C
Out Patient Clinic		Contraco Engineering
Cancer Hospital		Midmac Contracting
AL-Ahli Hospital		Contraco / Conspeel





**Hotels & Resorts**

# **ONGOING & FINISHED PROJECTS**





Project / Client		Contractor
Rotana Hotel		Dragoni International
Qatar Airways Hotel		Arabian A/C Contg.
Grand Hyatt Hotel		Almoayyed A/C
Sealin Beach Resort		Q.N.H
Ritz Carlton Hotel		C.C.I.C
Doha Marriott Gulf Hotel		C.D.C
Doha Sheraton Hotel - Conference Hall		Tags Engineering

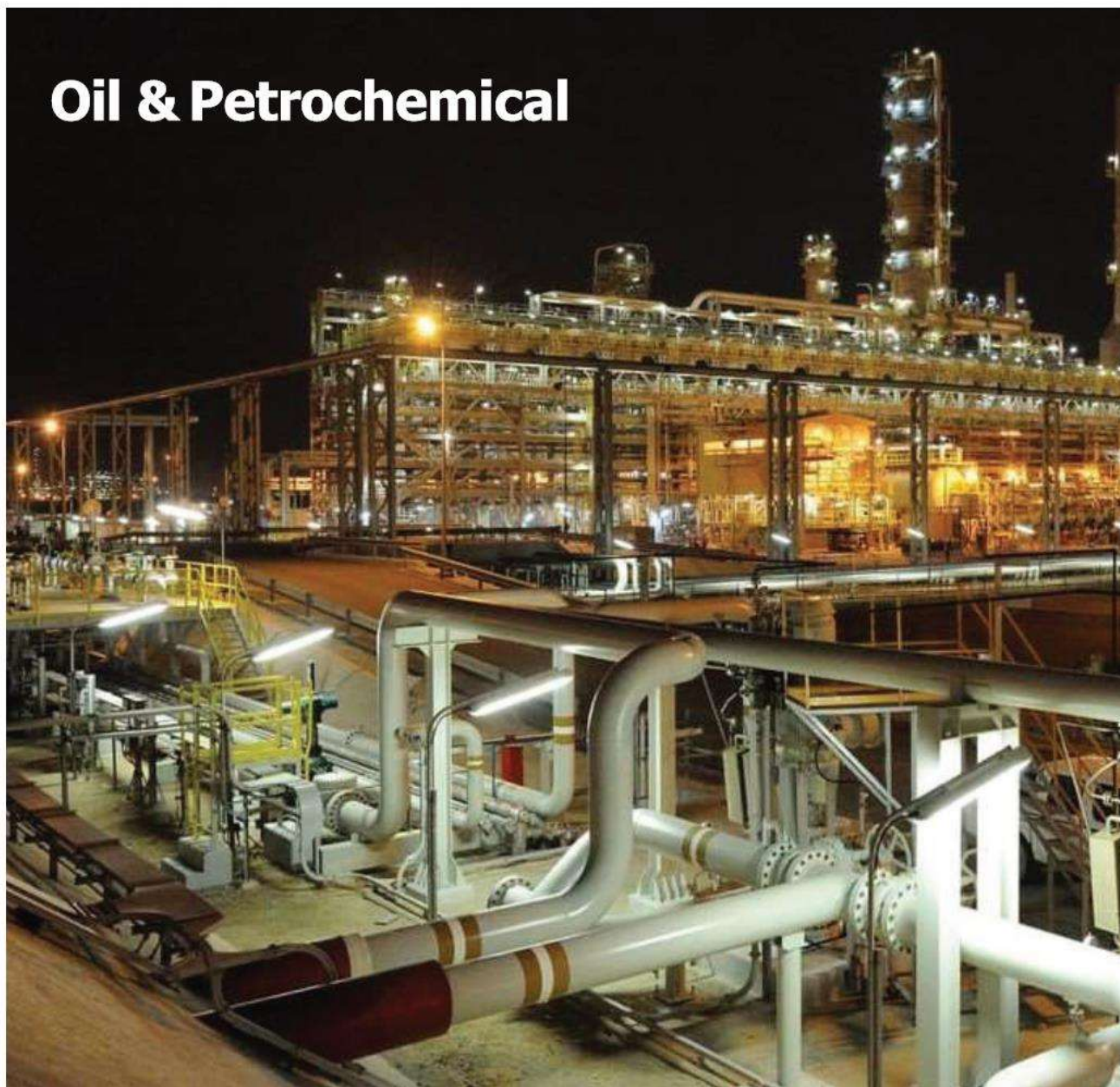


# Mosque



Project / Client	Contractor
Al Wajbah Palace - Majlis	MIDMAC
Mosque - M 112	Salem AL - Ansari
Mosque - M 111A	Salem AL - Ansari
Mosque - M 107	Badr Contracting
Mosque - M 119	Badr Contracting
Doha Air Base Mosque	Ajjaj Engineering
Abu Baker Mosque	Shannon Contracting

# Oil & Petrochemical



Project / Client

Contractor

Q - Chem Project

Midmac Conts.

Halul Island Project

Petroserv

Ras Laffan on Shore Facilities Project

Midmac Contg.



# Power & Sub-Stations



**Project / Client**

**Contractor**

**Kahramaa Works**

**Networks Elec. & Mech. Cont.**

Kahra Maa Substations

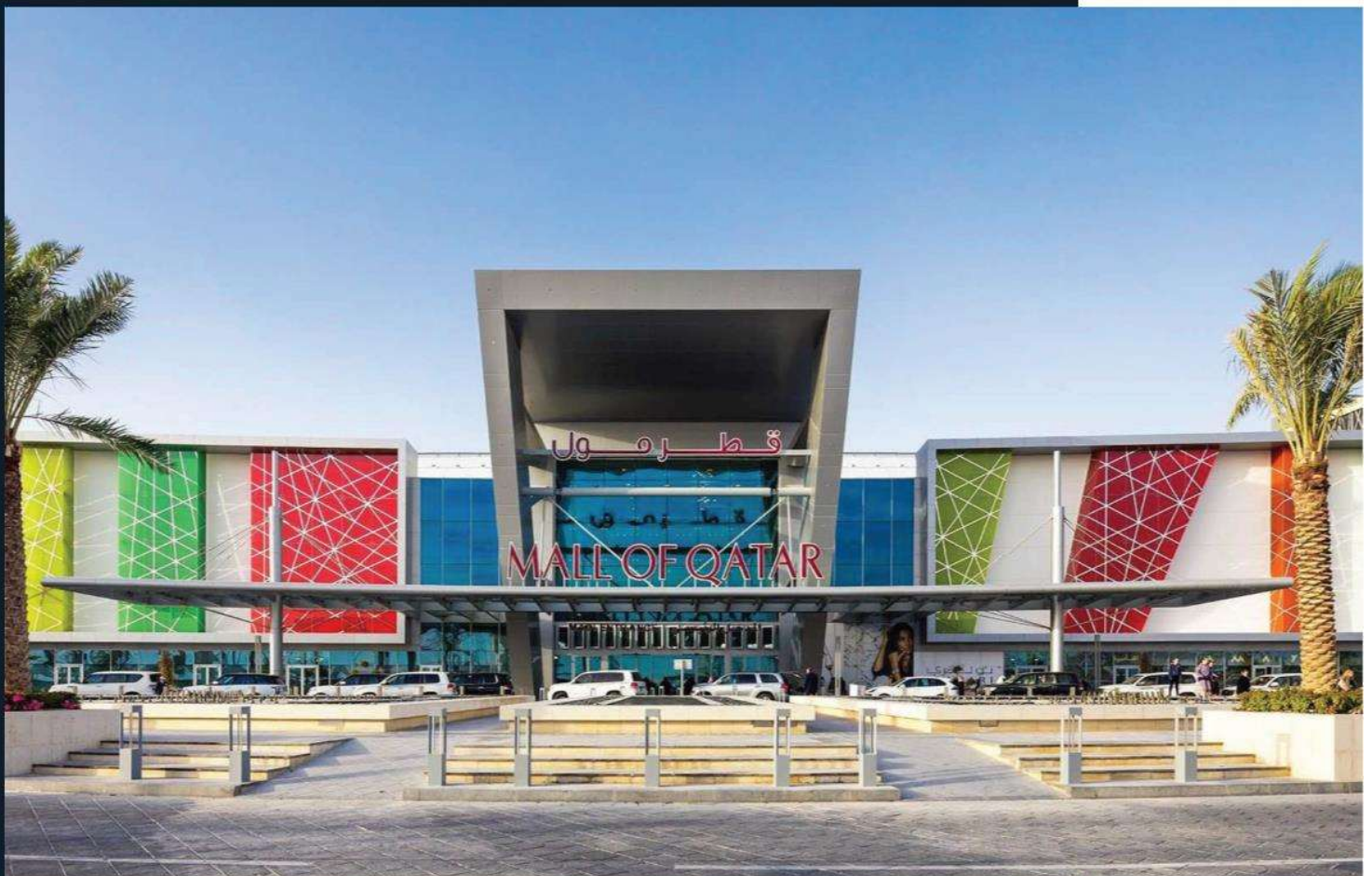
Arabian A/C Contg.

**Qatar General Electricity & Water  
Corporation**

**Kharamaa**

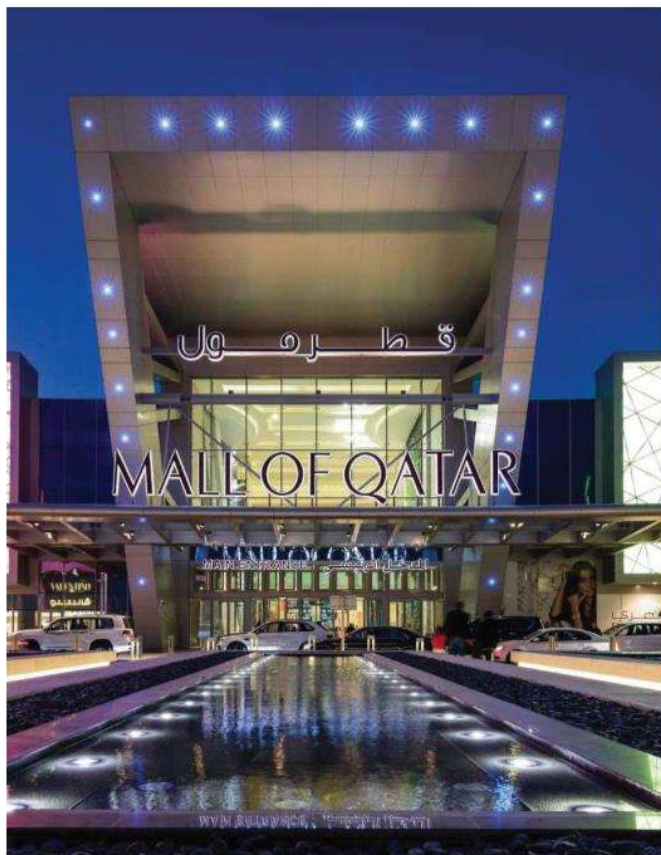


# Residential & Commercial





Project / Client	Contractor
City Centre Expansion	QMMC
Mall of Qatar	Mall of qatar
ISF Camp	Actor / Al Jaber
P019 Road & Infrastructure	Q.B.C.
Wedding Hall Complex @ Al Wakra	C.G.C.
Qatar Foundation Tunnel	Zublin International Qatar
Wedding Hall Complex @ Al Ruffa	Combined Group
Viva Bahriya 20 V & 21V	Ramco / Powerline Engineering
Heart of Doha - JK1	Trans Gulf
Lusail City	Regency Pools & Landscaping
QIIB Tower	Hamad Bin Khaled Engineering Services
Qatar Foundation - Female & Male Housing	Conspel Qatar



# Residential & Commercial



Project / Client		Contractor
Qatar Islamic Museum Extension		Baytur Construction & Contracting
Al-Jazeera New Service Building		Barzan Engineering Services
Dukhan Cinema		Al-Mana Engineering & Contracting
Dukhan Cinema		Al-Mana Engineering & Contracting
The Pearl Qatar - Parcel	17	United Contracting
The Pearl Qatar - Parcel	15	Megatec
Doha City Center Expansion		Al Habtoor Engineering
Al Seal Tower		Al Seal Contracting



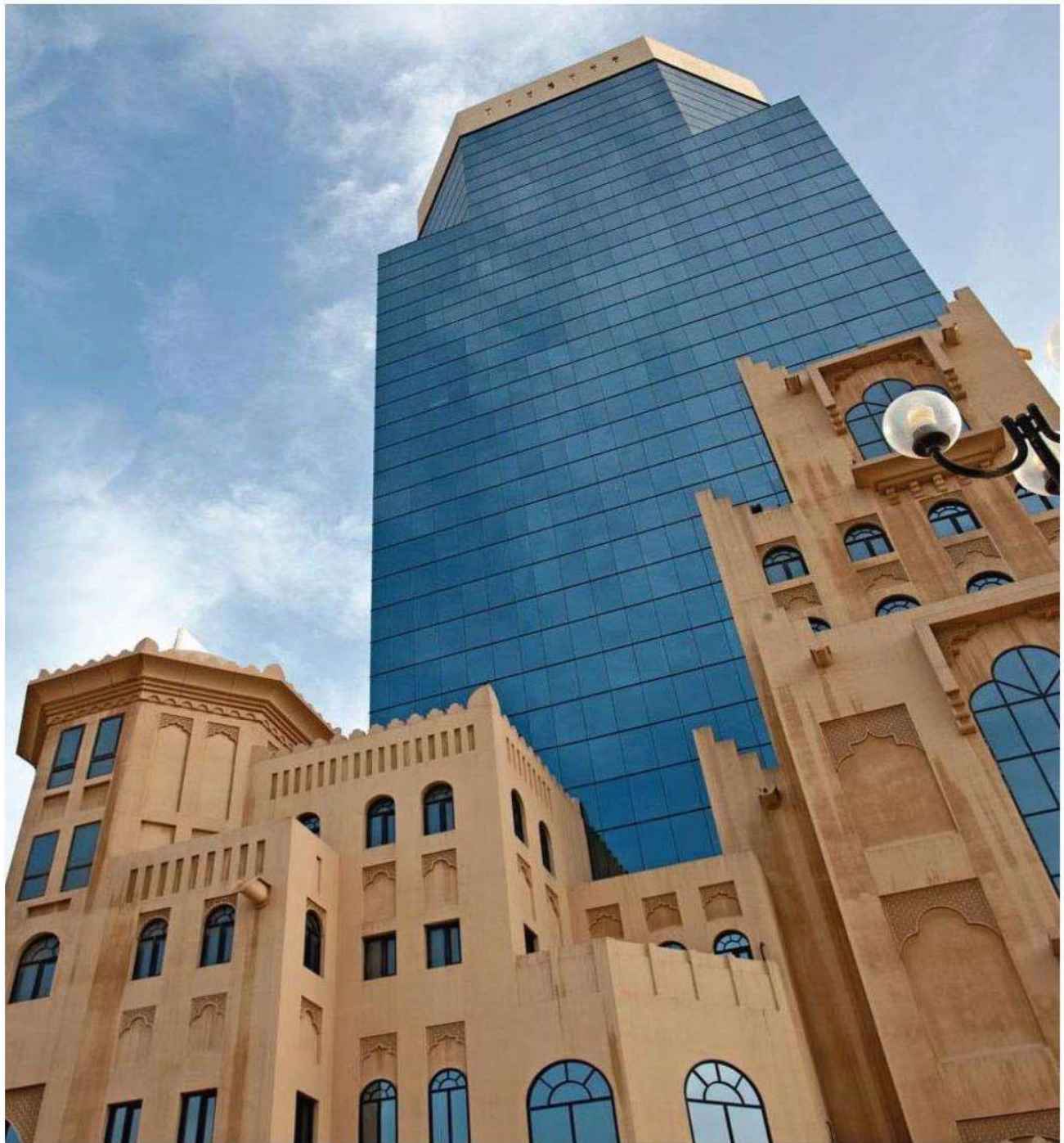


Project / Client		Contractor
Al Alawi Tower		Al Jaber Electro Mech
AL Asiri Tower		H.B.K. Engineering
Platinum Tower		Tags Engineering
Al-Jazi Tower		Qatari Modern Maun.Co.
Commercial Bank		Arabian A/C Contg.
Al-Sulity Tower		Al-Jaber Trading & Contg.



Project / Client	Contractor
Q.N.B - Investment Dept.	AL - Moayyed Co.
City Centre - Qatar	Trags Eng. Co.
Qatar Gas H.Q. Bldg.	K.D.S
Qatar Int'l Islamic Bank	Trags Eng. Co.





Project / Client	Contractor
Land Mark Shopping Mall	H.B.K Engineering
City Centre Mall	Trags Electrical
QNB Branch At Air Force Base	Darwish Electricals
Barazan Tower	Contraco Engineering
Doha Office Tower	Q.B.E.C

Project / Client	Contractor
Honda Showroom	C.D.C / GEMCO
Q - Tel Fit out Building	AL - Seal Contg.
AL - Bida Tower	Q.B.E.C
Ras Laffan liquefied Gas Co. H.Q. Bldg.	C.D.C / GEMCO
Qatar Gas H. Q. Bldg.	Darwish Engineering
Ministry Of Interior Tower	C.D.C / K.D.S
Awqaf Tower	Midmac Contracting



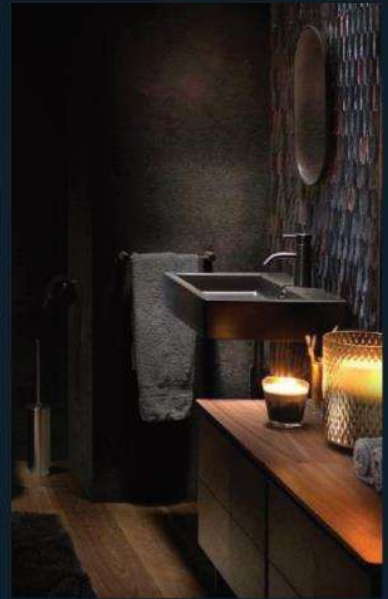


# Road & Infrastructure



Project / Client	Contractor
ASHGHAL Project @ Duhail Area	Stream Engineering
Project 7 - Infra & Road Project @ Al Rayyan	DOGUS
New Orbital Highway P 2-	Strome Construction
Dukhan Housing Project IX	J.T.C
Ras Laffan Complex	Construction Development Co.
Camel Race Track	Al-Bida Technical Services
Camel Race Track	Accurate Electromechanical Projects
Street Lighting Around Doha	Al-Jaber Electrical





T: +974 4145 2900 | P.O.Box: 15480, Doha - Qatar | E: [info@cmsqatar.net](mailto:info@cmsqatar.net)  
[www.cmsqatar.net](http://www.cmsqatar.net)